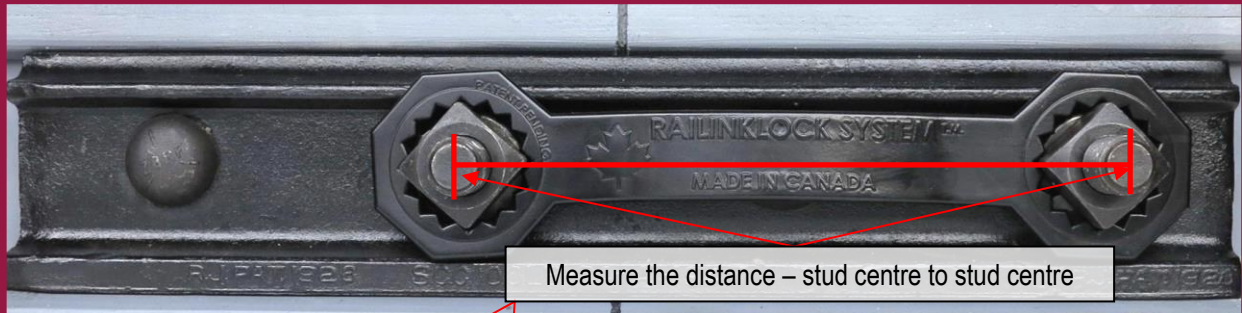


# Raillock System™\* – Measuring Instructions

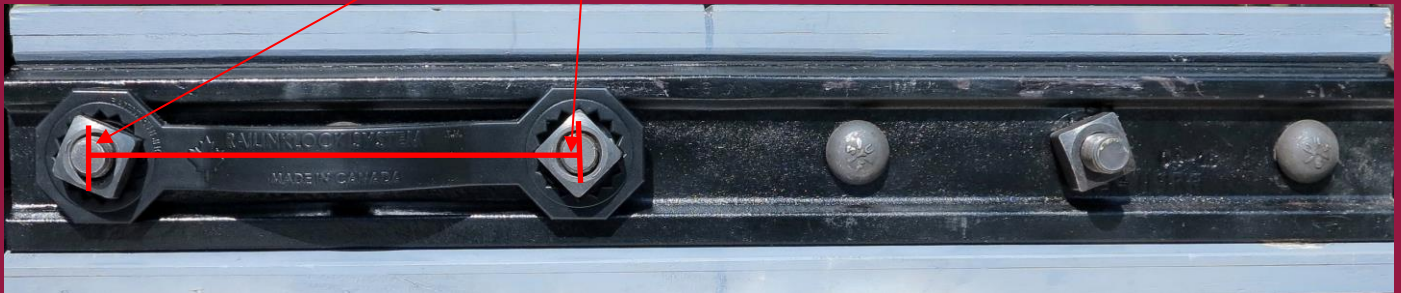
**Raillock System™** making railway tracks safer by securing two nuts on the joint or frog bar together, creating resistance between them to minimize their ability to rotate, resulting in reduced risk of nut movement and loss of joint or frog bar clamping pressure.

Raillock System™ example of the 11-inch, 12-inch joint bar and 5.5 inch frog bar sizes. More sizes available.

11-inch - designed to be used with 22" (559 mm) or 33" (838 mm) joint bars with 1 5/8" (41 mm) square nuts.



12-inch - designed to be used with 25" (635 mm) or 36" (914 mm) joint bars with 1 5/8" (41 mm) square nuts and 24" (610 mm) or 36" (914 mm) joint bars with 1 3/4" (44.5 mm) square nuts.



5.5-inch - designed to be on frog bars 2 1/8" (54 mm) hexagonal nut or or 2 1/8" (54.5 mm) square nuts.



## Measure two things:

1. Stud Centre - from the centre of one stud to the centre of an adjacent stud
2. Measure nut size – from flat to flat

**1 The installation of Raillock System™ does not remove the need for standard safety & maintenance procedures**

**\* Raillock System™ is a Registered Trademark and Patent Pending of Tafcan Consulting Ltd. & LDM Associates Limited**

**For more information contact: Raillock LLC, [scottw@raillock.net](mailto:scottw@raillock.net) 434-258-9820, [vanf@raillock.net](mailto:vanf@raillock.net), 434-401-5660 or Tafcan Consulting Ltd., [tafcan@cogeco.ca](mailto:tafcan@cogeco.ca), 905-334-3771**