

# Railinklock System™\* – Installation & Removal Instructions

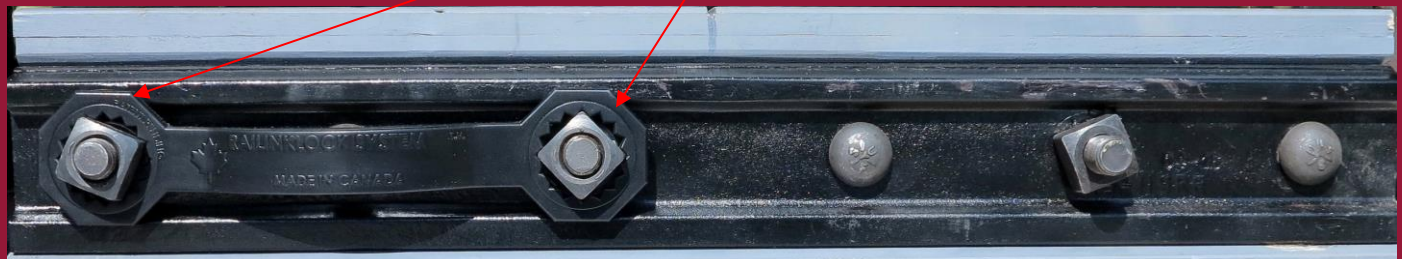
**Railinklock System™** making railway tracks safer by securing two nuts on the joint or frog bar together, creating resistance between them to minimize their ability to rotate, resulting in reduced risk of nut movement and loss of joint bar clamping pressure.

Railinklock System™ example of the 11-inch and 12-inch sizes. More sizes available.

11-inch - designed to be used with 22" (559 mm) or 33" (838 mm) joint bars with 1 5/8" (41 mm) square nuts.



12-inch - designed to be used with 25" (635 mm) or 36" (914 mm) joint bars with 1 5/8" (41 mm) square nuts and 24" (610 mm) or 36" (914 mm) joint bars with 1 3/4" (44.5 mm) square nuts.



## Installation Instructions:

1. Joint bars, bolts, lock washers and nuts must be installed on the railway track joint and the nuts torqued as directed by the manufacturer's specifications.
2. Once the joint bar assembly has been properly installed, **Railinklock System™** units are applied with the **Railinklock System™** name visible.
3. Apply the units on adjacent nuts and push them on as far down the nut as possible.
4. Complete installation of **Railinklock System™** for appropriate nuts on each joint bar.
5. Follow all normal safety and maintenance inspections.<sup>1</sup>
6. **Railinklock System™** units are easy to remove and reinstall for maintenance or when torque checks are required.

## Removal Instructions:

1. If the units need to be removed - use your fingers (gloves if needed) to pull up on the ends of the unit beside the nuts. Do not pull up in the middle. Optional installation and removal tool available.
2. If installing or reinstalling in freezing conditions, keeping the units at a temperature above freezing will assist in the installation.

<sup>1</sup> The installation of **Railinklock System™** does not remove the need for standard safety & maintenance procedures

\* **Railinklock System™** is a Registered Trademark and Patent Pending of Tafcan Consulting Ltd. & LDM Associates Limited